

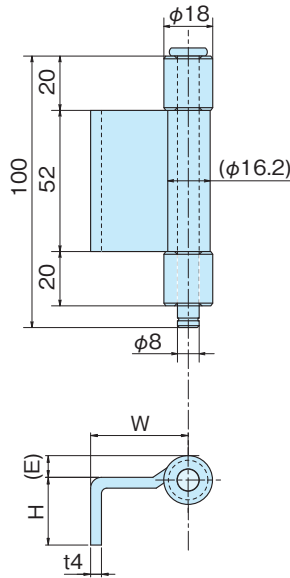
# 防水型蝶番(3管)

WATERPROOF HINGES

A-31~40-3(ss)・SA-31~40-3(sus)



A-33



**特 徴** ●ピンが抜き差しでき、取付けが簡単です。  
**Feature** ●SA-31~40はステンレス製で耐食性に優れています。

●It's slip-joint type and simple to install on the panel.  
 ●SA-31~40 is stainless steel product, so it has a high resistance to corrosion.

**材 質** ●A-31~40/鉄(SPHC)4t  
 ●SA-31~40/ステンレス(SUS304)4t

**表面処理** ●A-31~40/ピンのみ三価クロメートめっき

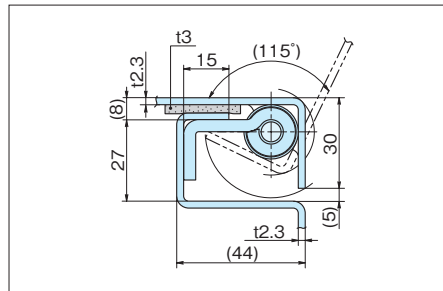
**用 途** ●配電盤・分電盤・制御盤・その他各種防水型BOX

**Material** ●A-31~40/Hot rolled steel plate (SPHC)4t  
 ●SA-31~40/Stainless steel plate (SUS 304)4t

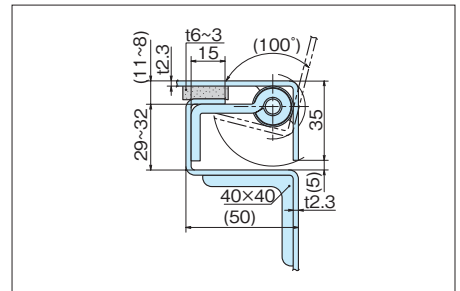
**Finish** ●A-31~40/Zinc chromate plating (Pin only)

**Specific Use** ●Distribution, control boards, all kinds of waterproof panels.

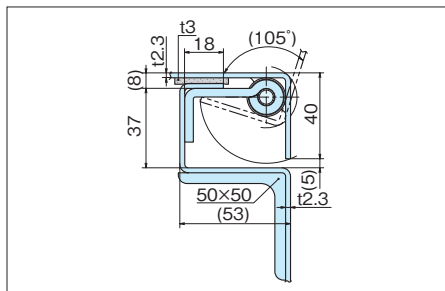
■参考取付例  
 Example of installing reference



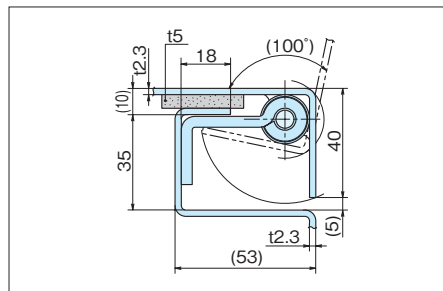
(A-31・SA-31)



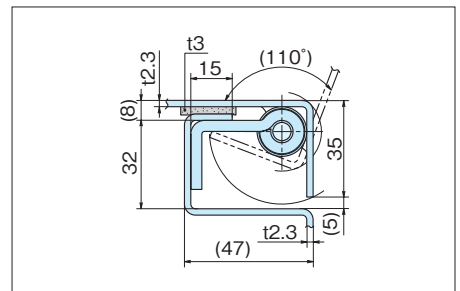
(A-33・SA-33)



(A-35・SA-35)



(A-37・SA-39)



(A-40-3・SA-40-3)

品 番 Product No.		W	H	(E)	自 重(g) Weight		入 数 Lot	単 価 Price	
SS	SUS				SS	SUS		SS	SUS
A-31	SA-31	29	20	5	222	217	30	¥320	¥1,150
A-31-6	SA-31-6			7	222	217		¥320	¥1,150
A-33	SA-33	36	25	8	242	235	20	¥320	¥1,150
A-35	SA-35	38		5	246	242		¥320	¥1,150
A-37	SA-39			8	243	243		¥320	¥1,150
A-40-3	SA-40-3	33		5	238	231		¥320	¥1,150
A-40-3-6			6	238		¥320			